



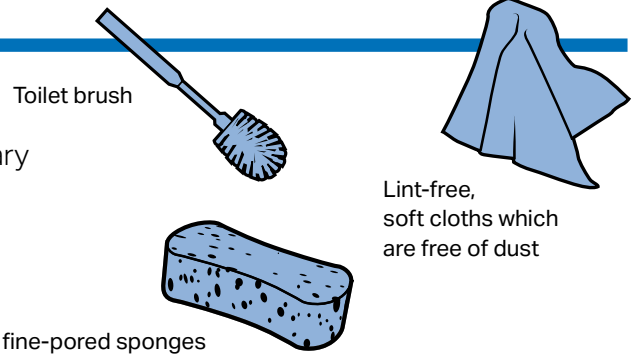
←
Watch the Geberit
maintenance guide video.

GEBERIT AQUACLEAN MERA CLASSIC MAINTENANCE **GUIDE**

SUPPLIES

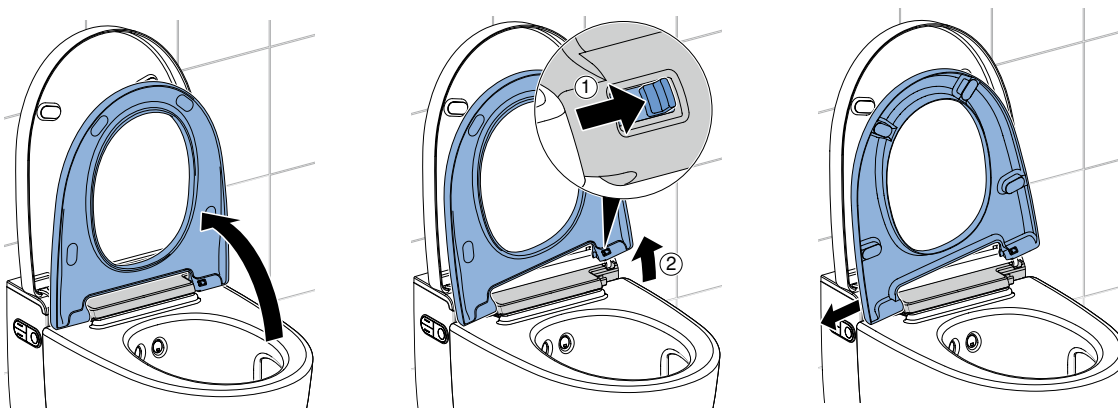
USE GENTLE CLEANING PRODUCTS

- **Use** only water and cleaning agents suitable for sanitary
- **Remove** limescale with a mild cleaning vinegar
- **Always** dry all surfaces after cleaning



DAILY CLEANING

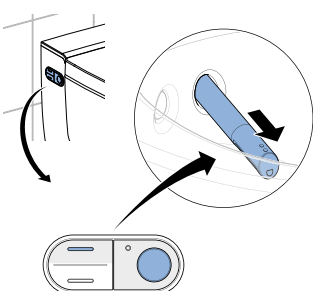
- **Gently clean the toilet bowl and lid** (inside and outside)
- **Carefully clean the seat** – you can remove and put it back easily



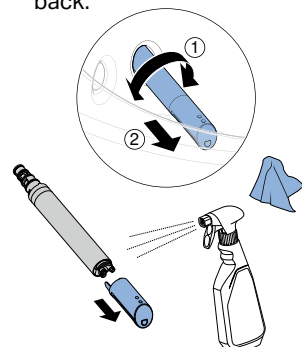
WEEKLY CLEANING

→ Clean the shower arm and dryer arm

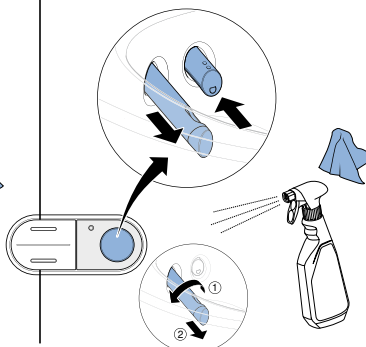
1. Extend the shower arm.



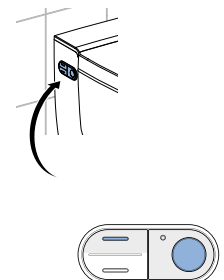
2. Pull out the spray nozzle, clean and dry it, then put it back.



3. Pull the dryer arm out, clean and dry it.

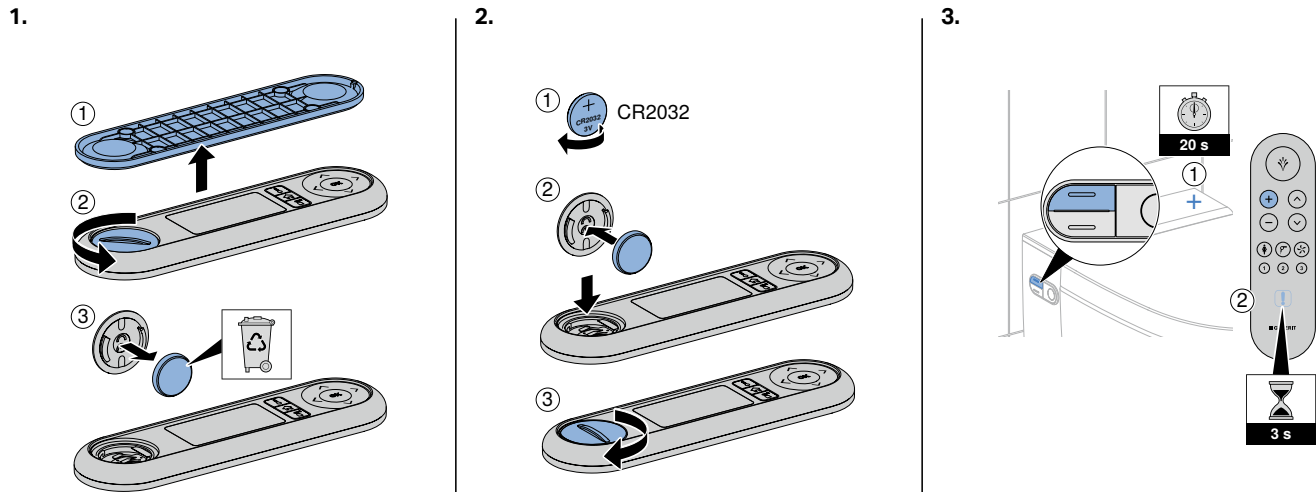


4. Retract the dryer arm.



YEARLY MAINTENANCE

- Replace the remote control battery (type CR2032)
- Reconnect the remote control
- To replace the ceramic honeycomb filter, check the user manual (page 66) or use the Geberit Home App*.



CONSUMABLES

→ All parts and accessories can be ordered online: geberit.be/webshop

| | | |
|---|------------------------------|---|
| Geberit AquaClean cleaning agent - bottle 500ml | Art. no. 242.546.00.1 |  |
| Geberit AquaClean descaling agent set (4 pcs) | Art. no. 147.047.00.1 |  |
| Geberit AquaClean descaling agent set (10 pcs) | Art. no. 147.048.00.1 |  |
| AquaClean Mera spray nozzle | Art. no. 243.241.11.1 |  |
| AquaClean Mera dryer nozzle | Art. no. 243.245.11.1 |  |
| AquaClean Ceramic honeycomb filter set (2 pcs) | Art. no. 147.072.00.1 |  |

**KNOW
HOW
INSTALLED**

TECHNICAL SUPPORT:
Mail: tech.be@geberit.com
Tel: 02 252 01 11

CONTACT:
Iris Van den Driessche
Mail: hotel.be@geberit.com
Mobile : 0478 45 51 03

GEBERIT HOME APP
*Available in App Store
and in Google Play Store