

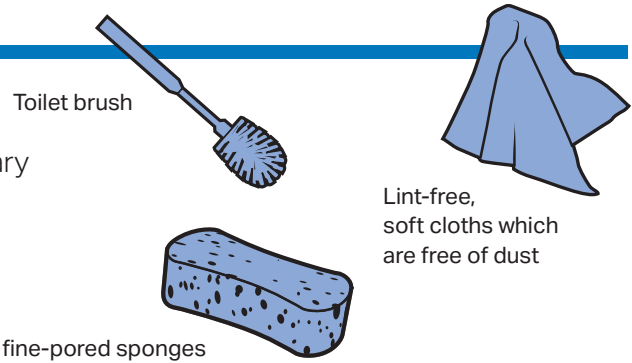
► Watch the maintenance video on YouTube

GEBERIT AQUACLEAN SELA MAINTENANCE **GUIDE**

SUPPLIES

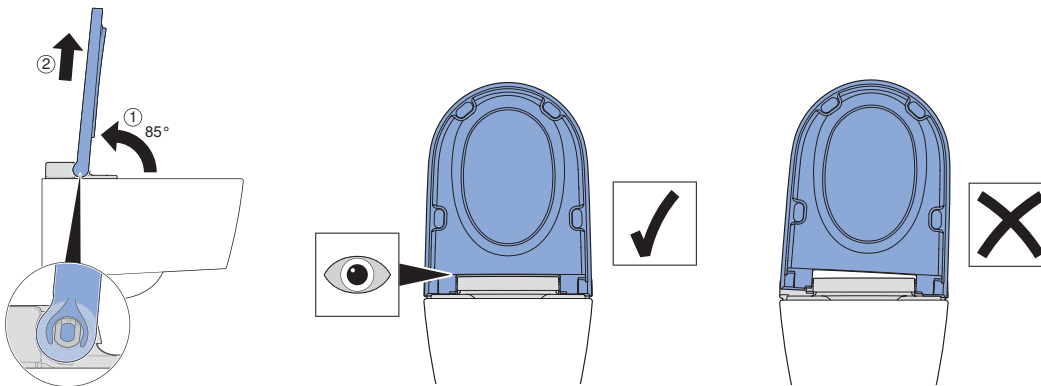
USE GENTLE CLEANING PRODUCTS

- **Use** only water and cleaning agents suitable for sanitary
- **Remove** limescale with a mild cleaning vinegar
- **Always** dry all surfaces after cleaning



DAILY CLEANING

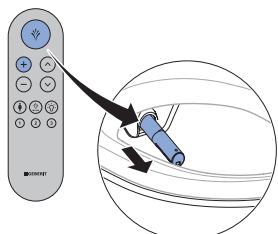
- **Gently clean the toilet bowl and lid** (inside and outside)
- **Carefully clean the seat** – you can remove and put it back easily by lifting the toilet seat up and removing it from the hinges at an angle of 85°.



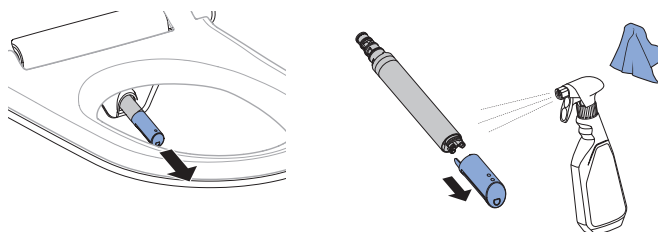
WEEKLY CLEANING

→ Clean the shower arm and dryer arm

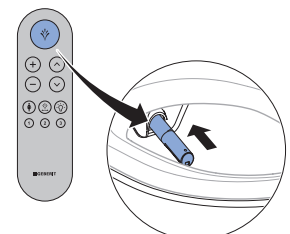
1. Extend the shower arm.



2. Pull out the spray nozzle, clean and dry it, then put it back.



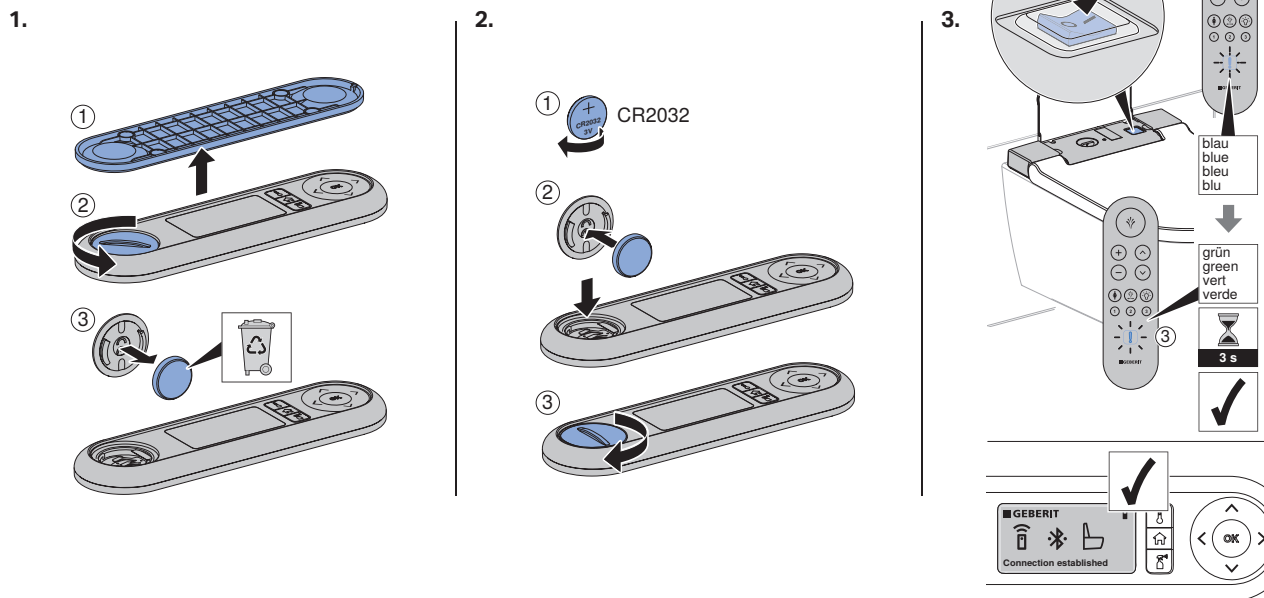
3. Retract the shower arm.



YEARLY MAINTENANCE

→ Replace the remote control battery (type CR2032)

→ Reconnect the remote control



CONSUMABLES

→ All parts and accessories can be ordered online: geberit.be/webshop

Geberit AquaClean cleaning agent - bottle 500ml Art. no. **242.546.00.1**



Geberit AquaClean descaling agent set (4 pcs) Art. no. **147.047.00.1**



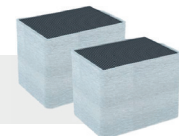
Geberit AquaClean descaling agent set (10 pcs) Art. no. **147.048.00.1**



AquaClean Sela spray nozzle Art. no. **243.527.11.1**



AquaClean Ceramic honeycomb filter set for AquaClean Sela with DuoFresh module (2 pcs) Art. no. **147.072.00.1**



**KNOW
HOW
INSTALLED**

TECHNICAL SUPPORT:
Mail: tech.be@geberit.com
Tel: 02 252 01 11

CONTACT:
Iris Van den Driessche
Mail: hotel.be@geberit.com
Mobile : 0478 45 51 03

GEBERIT HOME APP
*Available in App Store
and in Google Play Store